

COMMERCIAL G12

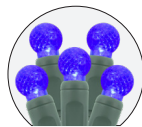
Commercial Coaxial LED Light String

The G12 is a spherical, 12mm diameter, faceted lens that creates a look similar to berries or small orbs where it's installed. Enjoy longer runs of light and easier installation using commercial LEDs, with water tight coaxial connectors to reduce maintenance time during the busy holiday season.

FEATURES

- Up to 90% energy savings over incandescent light string
- Coaxial power connection system provides strain relief and keeps moisture out of connections
- Durable construction includes thicker 20AWG wire
- Available in four different color options
- Connection accessories available for large scale installations while minimizing connections to power
- CSAUs Certified for indoor and outdoor use
- 3-season warranty

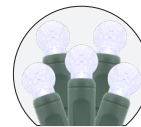
LISTINGS & RATINGS:



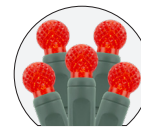
BLUE



GREEN



PURE WHITE



RED

COMMERCIAL COAX G12 ORDERING INFORMATION

420W MAX / 25 LEDs / 6" Spacing

ITEM NUMBER	COLOR	WIRE COLOR
G12-25/6-G-BL	Blue / 2.4W	Green
G12-25/6-G-GR	Green / 2.4W	Green
G12-25/6-G-PW	Pure White / 2.4W	Green
G12-25/6-G-RE	Red / 2.4W	Green

COMMERCIAL COAX LIGHT STRING ACCESSORIES

ITEM NUMBER	DESCRIPTION
LEDPWRCON-4A	120V AC 4amp Power Adaptor (Required)
LEDSPACER-12	12ft Extension Wire
LEDSPACER-20	20ft Extension Wire
LEDSPACER-50	50ft Extension Wire
POWERTAP-8	8-way Power Tap (1 male port - 7 female port)
POWERTAP-Y	"Y" Power Connector
POWERTAP-X	"X" Power Connector
POWERTAP-END	End Cap / Qty 10



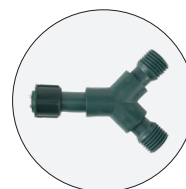
120V AC Power Adaptor



Extension Wire



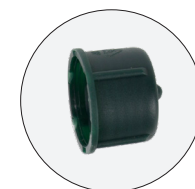
8-way Connector



Y - Connector



X - Connector



End Cap