

Model: WL-LED201

LEDme® Step Light

WAC LIGHTING

Responsible Lighting®

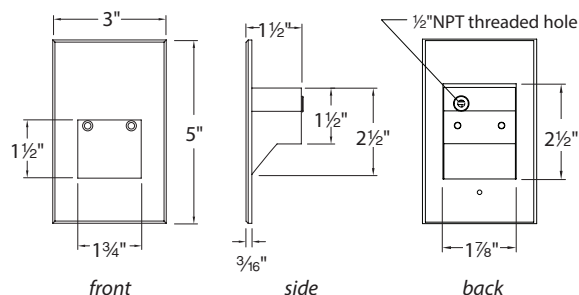


Fixture Type:

Catalog Number:

Project: _____

Location: _____



PRODUCT DESCRIPTION

Vertical rectangle LEDme® Step Light with Anti-microbial powder coat paint proven to restrain a wide range of bacteria, coliform, mold, fungus, algae, and yeast. . Designed for safety and style on stairways, patios, decks, balcony areas, walkways and building perimeters. Features an architectural design. Energy efficient for long-lasting indoor and outdoor lighting solutions. Creates an attractive, romantic impression at night.

FEATURES

- Direct wiring, no driver needed
- Title 24 JA8 - 2016 Compliant (120V only)
- Low profile, flush to wall aesthetics with no visible hardware
- 54,000 hour rated life
- Balanced lighting, free of shadows with minimum glare
- Up to 200 fixtures can be connected in parallel
- Replaceable LED module
- 5 year WAC Lighting product warranty

SPECIFICATIONS

- Construction:** Die-cast aluminum.
- Power:** Direct wiring, no remote driver needed.
- Input:** 120V 50/60Hz (277V special order/3000K, Amber (AM))
- Light Source:** HV-AC High Power LED, CRI: 90
Optional color lenses. Total power consumption of 3.5W
- Mounting:** Fits into 2" x 4" J-Box with minimum inside dimensions of 3"L x 2"W x 2"H Includes bracket for J-Box mount.
- Dimming:** Dim to 10% with ELV dimmer (120V only).
Approved dimmers: Lutron Nova-T NTELV-300 & NTELV-600, Lutron Vietri VTELV-600, Lutron Diva DVELV-300P, Lutron Skylark SELV-300P, Lutron Maestro MAELV-600
- Standards:** IP66, UL & cUL Listed for wet locations, Title 24 Compliant (120V only)

ORDER NUMBER

Model #	Color	Finish
WL-LED201 120V	27 2700K	WT White
	30 3000K	
	AM Amber (610nm)	

WL-LED201 - - **WT**

Example: **WL-LED201-30-WT**

For 277V, add "F" before the CCT: **WL-LED201F-30-WT**

wacighting.com
Phone (800) 526.2588
Fax (800) 526.2585

Headquarters/Eastern Distribution Center
44 Harbor Park Drive
Port Washington, NY 11050

Central Distribution Center
1600 Distribution Ct
Lithia Springs, GA 30122

Western Distribution Center
1750 Archibald Avenue
Ontario, CA 91760